

Eclipse™ Treatment Planning System

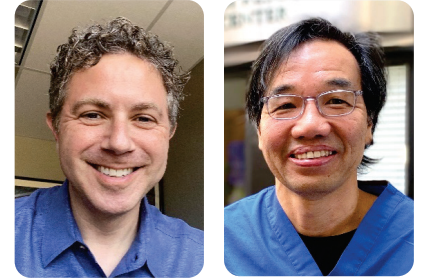
Keeping MarinHealth Cancer Care on the leading edge

Funding Goal: \$1,000,000

As our understanding of cancer evolves, cancer care is becoming ever-more personalized, drawing on chemotherapy, radiation treatment, immunotherapy, and other modalities. There is one aspect of care that affects every single patient who receives radiotherapy to reduce or eliminate a tumor. It's the technology that enables specialists to create an individualized treatment plan that makes radiation therapy safe, effective, and accurate.

Customizing a radiotherapy plan requires input from a team of clinicians who must share information and make collaborative decisions. The process starts with a simulation in which clinicians target areas for treatment with the greatest precision possible. Using three-dimensional CT imaging, specialists position the patient's body in ways that make tumors most accessible to therapy, mark the skin, and take scans. They identify positions that optimize treatment but are comfortable enough for the patient to hold during a 15–45-minute session. Analyzing data from this simulation, the team then carefully customizes a radiotherapy plan that details body positions, strength and angle of radiation beams, number of treatment fields, distribution of doses, and guidance in modulating radiation around normal tissue.

Technology that can manage diverse data inputs is what makes radiation therapy planning possible. But technology can evolve rapidly, rendering older systems outmoded. As of 2026, the planning software currently used at MarinHealth will no longer be supported by its manufacturer. Beyond updating software, MarinHealth is seizing this opportunity to take a quantum leap in cancer care. With philanthropic support, we will adopt a sophisticated new planning system, enriched with AI-supported features, that will make customizing radiotherapy to each patient more effective, accurate, safe, and efficient.



"I feel so fortunate to practice oncology here at our comprehensive cancer center in Marin. From our multi-disciplinary tumor boards to our clinical trials, we provide the best of academic oncology care in a community setting, with providers who take the time to get to know our patients and families. Our combination of compassionate care and state of the art oncology treatments sets Marin's cancer program apart."

— Alex Metzger, MD,
Medical Oncologist

"This is a very exciting time in Radiation Oncology with stunning advances in technology, software and artificial intelligence. We are so thankful for the generous support of our community which keeps us at the leading edge of personalized cancer care. Your support allows us to deliver the most accurate, effective and safe radiation treatments close to home."

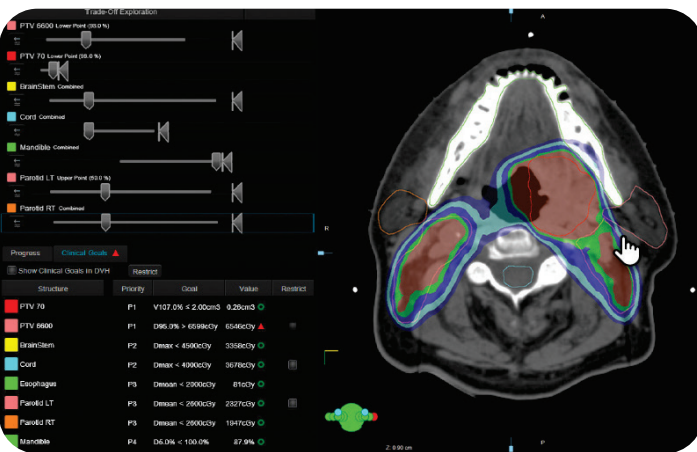
— Lloyd Miyawaki, MD, MPH
Radiation Oncologist

Providing the best care possible with advanced technology

The new radiotherapy planning system selected by MarinHealth is Eclipse™ by Varian, the leading provider of such systems in the country. More than just the latest software update, Eclipse is an integrated planning ecosystem that combines advanced imaging with precision-driven treatment delivery, enabling clinicians to make the most of radiotherapy's ability to help eradicate tumors.

Reflecting two decades of innovation, the Eclipse system harnesses AI-based capabilities and includes 15 new features that enable physicians to work with even greater precision. The system also supports peer review and collaboration on treatment plans, making it easy for specialists to share best practices.

Equipped with these and other advances, MarinHealth cancer care teams will have greater control over the customization and distribution of each patient's radiation doses, including the ability to adjust doses in real time to meet clinical goals. The new system also calculates doses with greater speed and accuracy, enabling radiotherapists to work more efficiently.



Eclipse™ Cancer Treatment Planning System at a Glance

Created by Varian Medical Systems, the country's leading provider of radiotherapy planning software, the Eclipse system will enable MarinHealth cancer care specialists to:

- Create a high-quality, personalized treatment plan for every patient who receives radiotherapy
- Reduce variability and achieve greater consistency in treatment by benchmarking against prior clinical practice
- Streamline the planning process and generate plans more quickly, increasing efficiency to treat even more patients

What can philanthropy do?

Radiologists need a clear, accurate, targeted action plan that addresses the patient's unique needs, adapts to the oncologist's clinical goals, and maximizes the benefits of this crucial component of cancer care. Your support for an innovative new radiotherapy planning system will help keep MarinHealth on technology's leading edge, continuing to provide the most advanced cancer care for our North Bay community.

To learn more or make a gift that supports MarinHealth's quest to provide innovative, personalized cancer care to North Bay patients, please contact MarinHealth Foundation at **1-415-925-7770** or Foundation@mymarinhealth.org.